

# Kiosk Function Check UI

## TASK

This document explains how to access the Kiosk Function Check UI and provides an overview of its basic functionality.

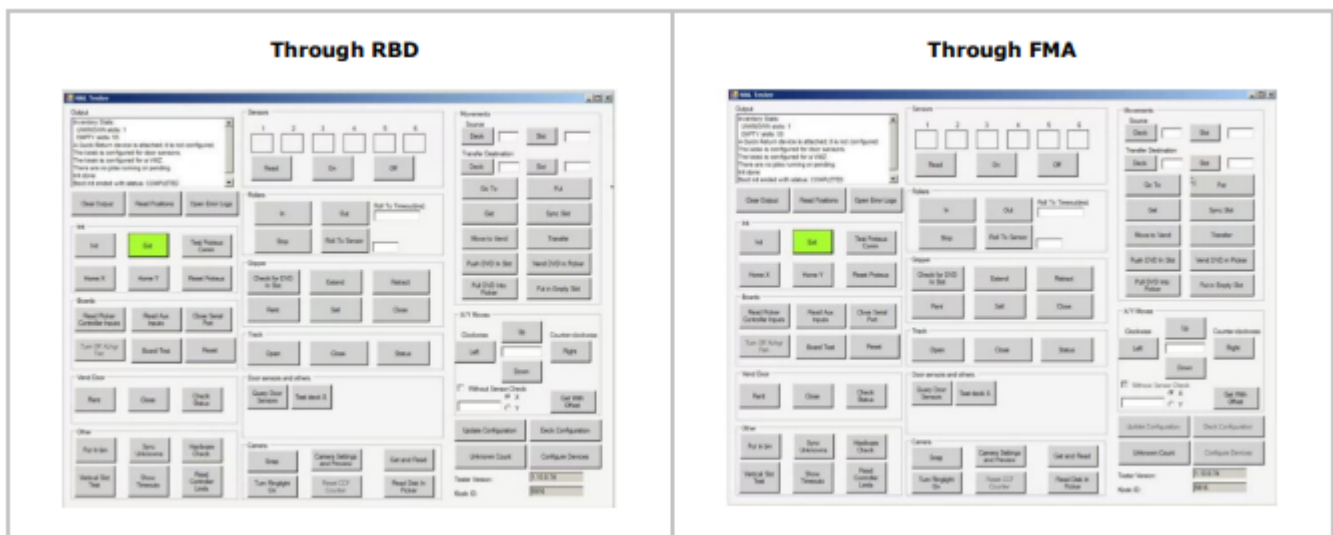
## AUDIENCE

FSR2 and ROS

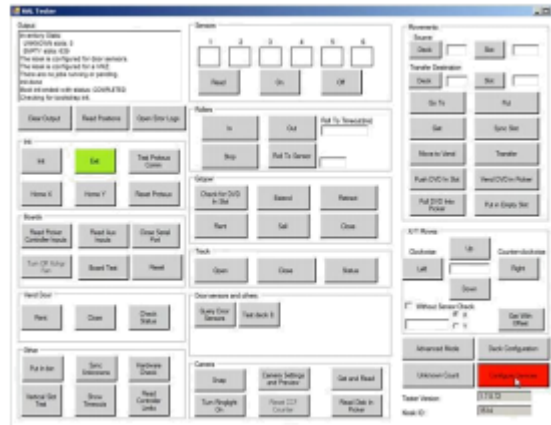
## PROCEDURE STEPS

### Accessing the KFC UI

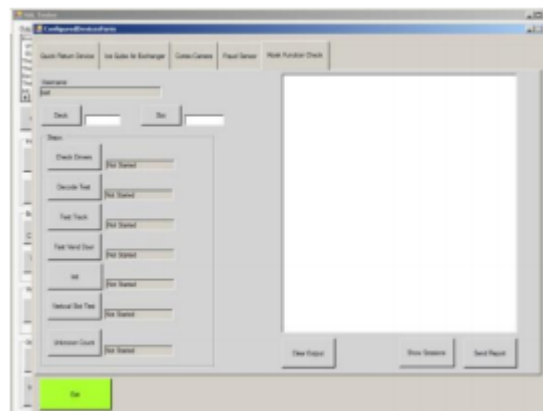
**\*\*NOTE\*\*** The KFC form uses the Control Panel (RBD) logins to populate the information sent up to the server when finished and "Send Report" is selected. As such, the KFC UI is only accessible through the Hall Tester, Configure Devices section when activated via the RBD screen. Notice that the buttons are active only in the RBD version screen shot below.



1. From the HAL Tester, click on the Configure Devices Button.



2. Select the Kiosk Function Check Tab.



## KFC UI Fields

\*The Username field will be auto-populated based on the currently logged in user.

\*The output fields in the 'Steps' group will initially populate to the value 'Not Started.' \*With the exception of the deck and slot text boxes, none of the output fields are editable.

## KFC UI Buttons

The Buttons in the Steps group perform the following functions (each will output either: Not Started, Failure, or Success):

**Check Drivers:** Check a touch screen is in the device list and it matches the current driver. Also it checks the camera shows in the device list and has the correct driver.

**Decode Test:** Given deck and slot, fetches the disk, reads the barcode and PUTs the disk back. A successful test occurs if there are at least 3 codes under one second for camera generations prior to 5. For a Cortex camera it's 1 code under 1 second.

**Test track:** The track should open and close without error.

**Test Vend door:** The vend door should move to rent and then close without error.

**Init:** Run an init without error.

**Vertical Slot Test:** Given a slot specified by the slot control, perform a vertical slot test. (a disk must be in that slot on each deck)

**Unknown count:** Provide the UNKNOWN and EMPTY count to the user.

### **KFC UI Report**

The session is saved when the user clicks the 'Send Report' button. This captures the following data (unless otherwise noted has a value of Success, Failure or NotStarted):

- (a) username (captured as a string)
- (b) timestamp of the session (captured as date/time)
- (c) the touchscreen device status
- (d) the camera device status

(e) the snap and decode status

(f) track test status

(g) vend door status

(h) init status

(i) vertical slot status

If the user exits the form or moves to another tab, the session is lost and a new one is created when the tab is reselected. Session records will be saved on the kiosk for two weeks, based on their timestamp. The session records will be available to review in the form of a BI report:

**Report Name:** Kiosk Function Check

**Report Location:** Field Operations -> Machine Management